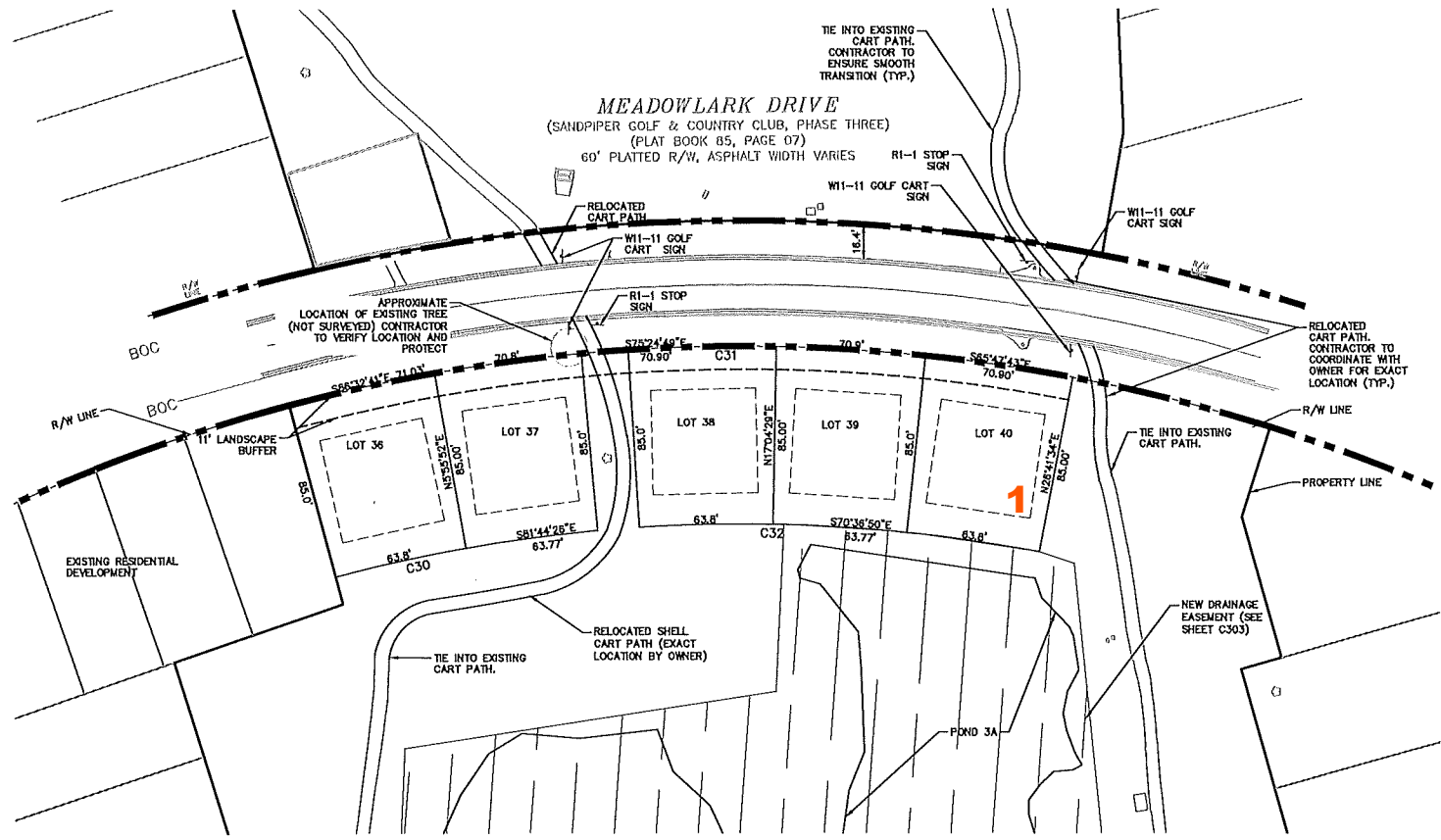
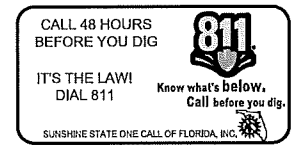
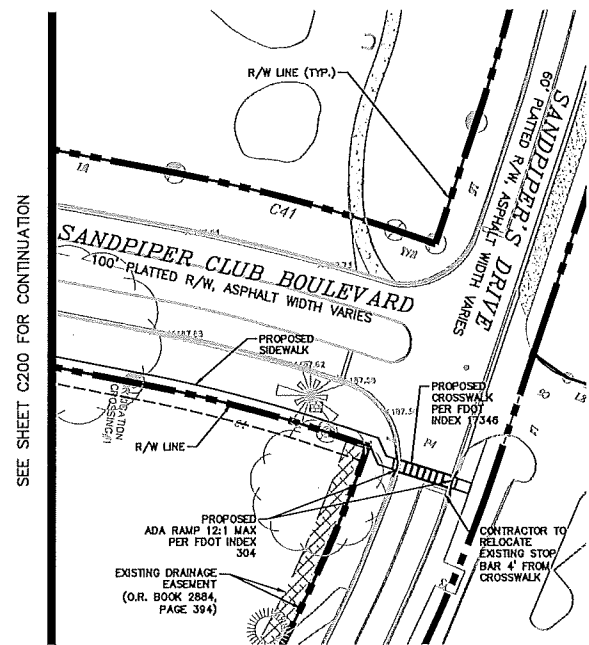
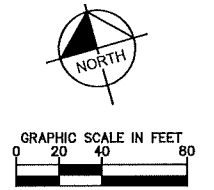




Plotted By: Tondocault, Jamison - Sheet: S01 SANDPIPER - Layout: C201 SITE PLAN June 14, 2019 08:28:35am K:\ok\_civil\049551000 - sandpiper\CADD\CONSTR\C201 SITE PLAN.dwg  
 This document, together with the concepts and designs presented herein, is intended only for the specific purpose and client for which it was prepared. None of and improper reliance on this document without written authorization and adaptation by Kimley-Horn and Associates, Inc. shall be without liability to Kimley-Horn and Associates, Inc.



CURVE TABLE						
CURVE	RADIUS	LENGTH	CHORD BEARING	CHORD	DELTA	TANGENT
C1	26.83'	9.39'	N10°48'56"W	9.35'	20°03'25"	4.75'
C2	26.00'	10.29'	S11°10'40"E	10.22'	22°40'29"	5.21'
C3	26.01'	39.15'	S43°18'52"W	35.55'	86°14'03"	24.35'
C4	13.00'	19.58'	N43°19'07"E	17.78'	86°19'04"	12.19'
C5	63.00'	98.97'	S44°52'26"E	89.10'	90°00'00"	63.00'
C6	76.01'	119.39'	S44°52'16"E	107.49'	90°00'00"	76.01'
C7	51.00'	80.11'	S44°52'37"E	72.12'	90°00'00"	51.00'
C10	41.00'	64.40'	N45°07'23"E	57.98'	90°00'00"	41.00'
C11	51.00'	80.11'	N45°07'23"E	72.12'	90°00'00"	51.00'
C12	76.00'	124.22'	N43°17'51"E	110.85'	93°39'03"	81.00'
C13	26.00'	42.51'	N43°18'32"E	37.93'	93°40'25"	27.72'
C14	41.00'	64.40'	S45°08'45"W	57.98'	89°59'59"	41.00'
C15	63.00'	98.96'	N45°08'45"E	89.10'	90°00'00"	63.00'
C16	51.00'	80.11'	S45°08'45"W	72.12'	90°00'00"	51.00'
C17	26.00'	40.84'	N45°08'45"E	36.77'	90°00'00"	26.00'
C18	28.00'	35.47'	S65°45'57"W	33.14'	72°34'20"	20.56'
C19	28.00'	35.18'	N45°22'44"W	32.91'	71°58'55"	20.34'
C20	28.00'	34.81'	S51°36'15"W	32.61'	71°13'31"	20.06'
C21	28.00'	34.40'	N57°44'18"W	32.28'	70°23'39"	19.75'
C22	26.00'	40.84'	S44°51'15"E	36.77'	90°00'00"	26.00'
C23	26.00'	40.84'	N45°08'45"E	36.77'	90°00'00"	26.00'
C24	41.00'	64.40'	N45°08'45"E	57.98'	90°00'00"	41.00'
C25	41.00'	64.40'	S44°51'15"E	57.98'	90°00'00"	41.00'
C26	39.12'	33.43'	S24°30'41"E	32.42'	48°57'28"	17.81'
C27	26.00'	40.85'	S44°50'33"E	36.78'	90°01'24"	26.01'
C28	28.00'	33.03'	S62°55'21"W	31.15'	67°35'12"	18.74'
C29	28.00'	33.85'	N43°32'19"W	31.83'	69°15'53"	19.34'
C30	760.00'	127.58'	N84°08'39"W	127.43'	9°37'05"	63.94'
C31	845.00'	474.32'	N72°52'25"W	468.12'	32°09'42"	243.59'
C32	760.00'	191.37'	N70°36'50"W	190.86'	14°25'36"	96.19'



KHA PROJECT 049551000		LICENSED PROFESSIONAL		<p>© 2019 KIMLEY-HORN AND ASSOCIATES, INC.          116 SOUTH KENTUCKY AVENUE, LAKELAND, FL 33801          PHONE: 883-701-8702          WWW.KIMLEY-HORN.COM CA 0000696</p>	DATE	BY
DATE JUNE 2019	ELISA T. HARDEN	REVISIONS	DATE		BY	
SCALE AS SHOWN	F. LICENSE NUMBER 65710	SHEET NUMBER C201		CITY OF LAKELAND		
DESIGNED BY JRT	DRAWN BY JRT	PREPARED FOR D COURSE DEVELOPMENT, LLC		SHEET NUMBER C201		
CHECKED BY ETH	DATE	LOT LAYOUT		CITY OF LAKELAND		